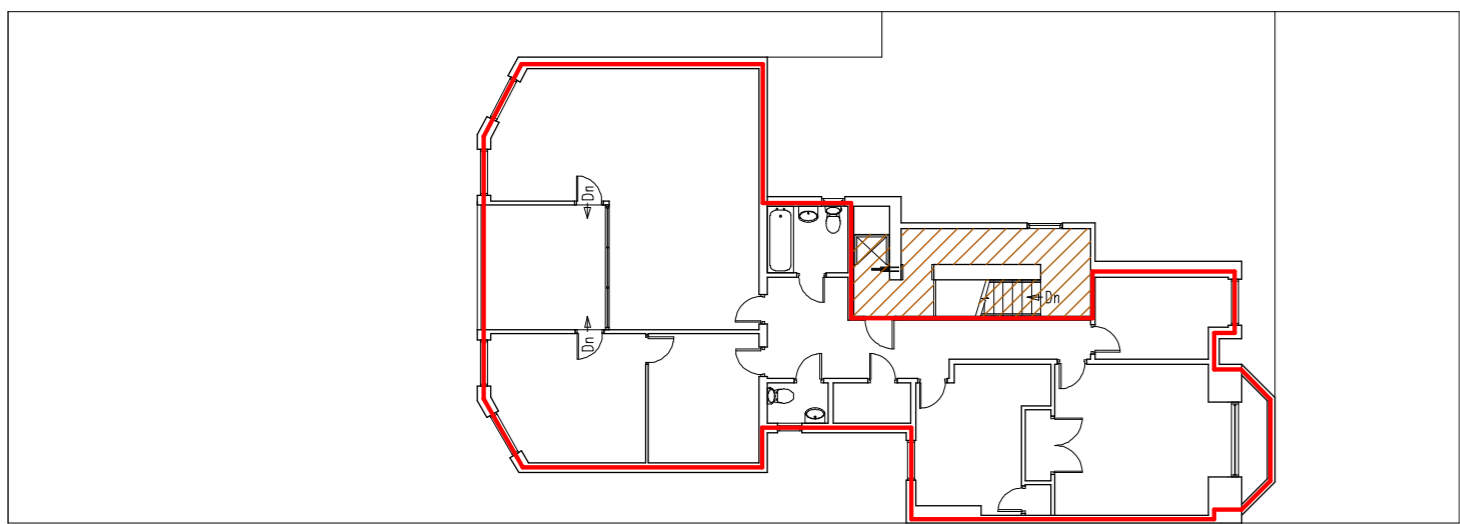
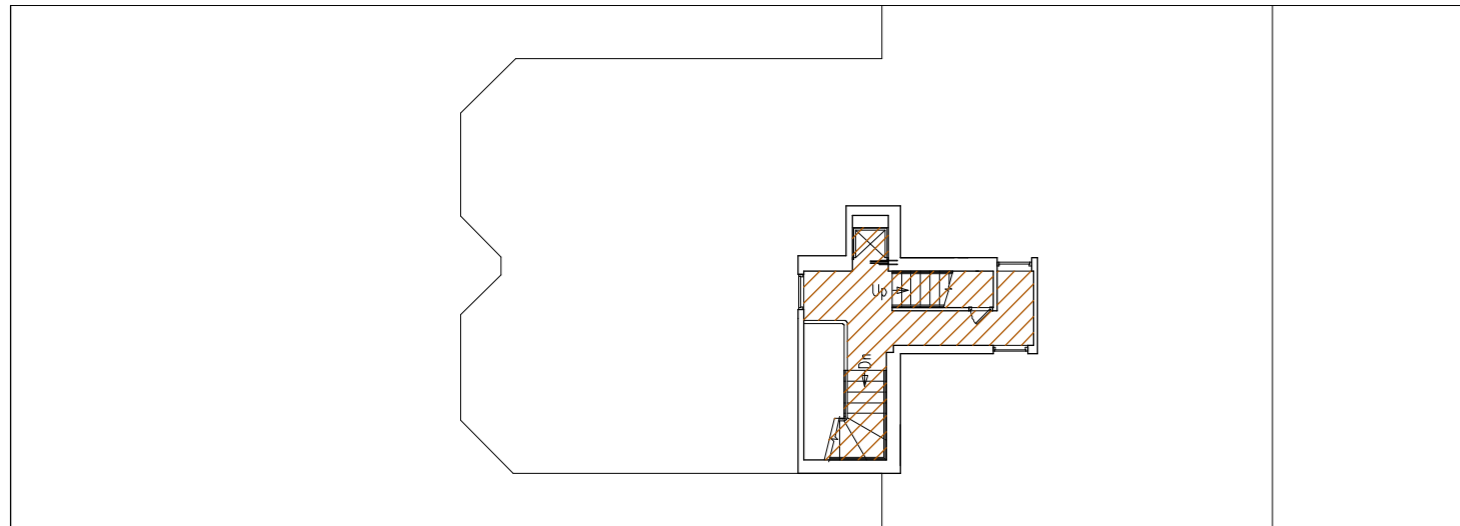


Lease Plan

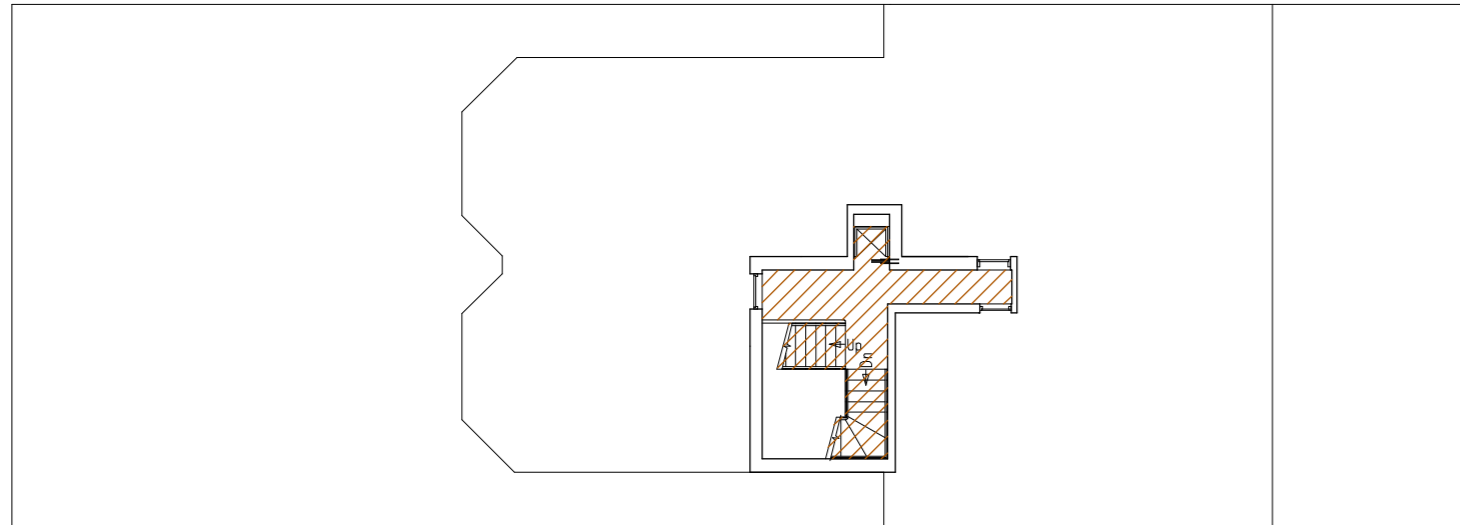
Plan 1



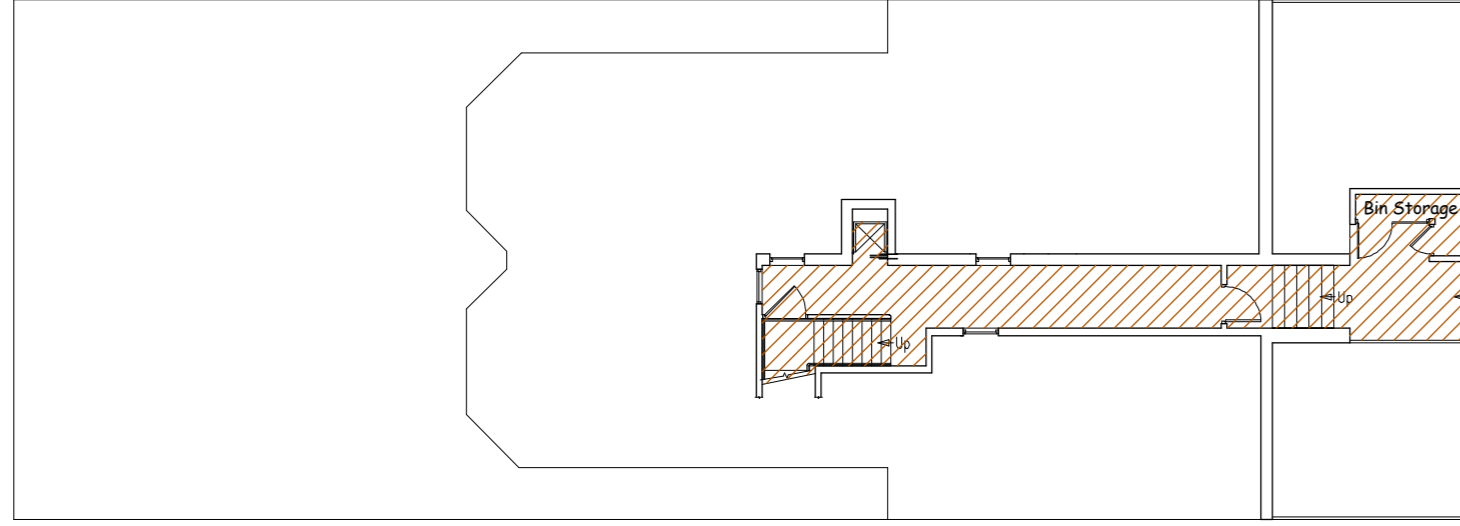
Scale 1:200



Scale 1:200



Scale 1:200



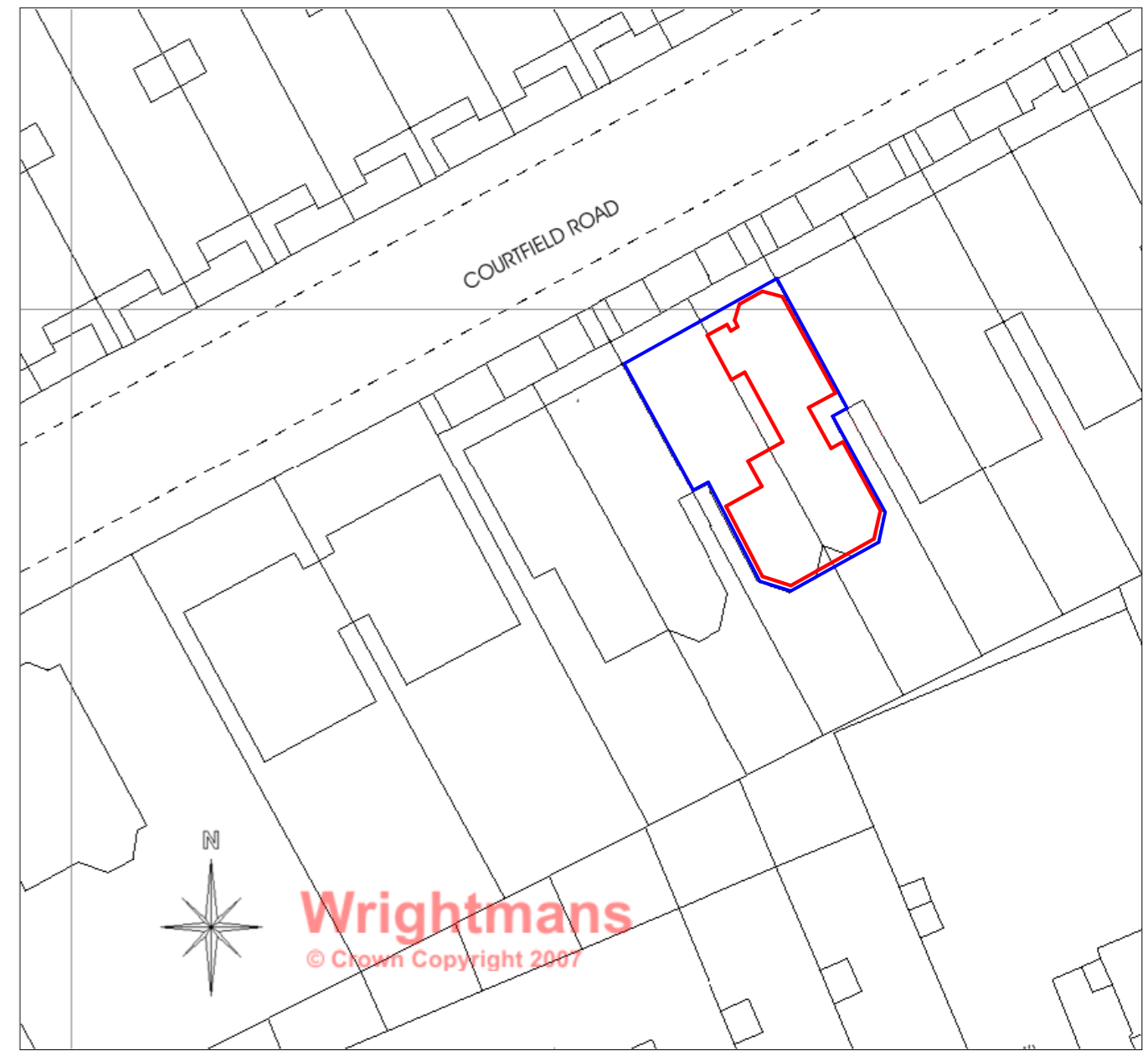
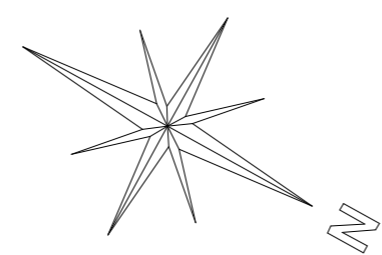
Scale 1:200

Third Floor
Flat 18
12 Courtfield Road
London
SW7 4DA

Second Floor
Flat 18
12 Courtfield Road
London
SW7 4DA

First Floor
Flat 18
12 Courtfield Road
London
SW7 4DA

Ground Floor
Flat 18
12 Courtfield Road
London
SW7 4DA



Scale 1:500

Plan 2

Location Plan

NOTES

The areas edged in red on the Plan represent that to which the Lease refers for the Third Floor property known as Flat 18, 12 Courtfield Road, London SW7 4DA.

The areas hatched in brown on the Plan are communal and used for access and egress.

The area edged in blue on the Location Plan marked "Plan 2" means the building of which the Demised Premises form part known as 12 Courtfield Road, London SW7 4DA.

Wrightmans
Land Registry Compliant Plans
Villiers House
110 Villiers Road, Oxhey Village, Herts WD19 4AW
T. 01923 211 421 - F. 05601 140158
Email: info@wrightmansplans.co.uk
Website: www.wrightmansplans.co.uk

DRAWING TITLE Lease Plan for premises at Flat 18 12 Courtfield Road London SW7 4DA			
SCALE 1:500 1:200	DATE 14/09/2007	DRAWN BY B.K.	APPROVED K.S.

DRAWING NUMBER WP1095	REV
Additional copies of these Plans are available on request. We do not recommend submitting anything other than our original plans to the Land Registry as most reproductions will be rejected due to distortion and scaling inaccuracy.	
SIZE A2	